

# DOMINO PHOTO FLIP



**I** This photo is 4x6 inches and the 5 flip tabs are 2x4 inches. This makes our calculations the following (in.):

w: 4

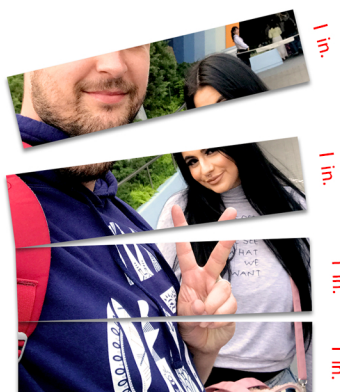
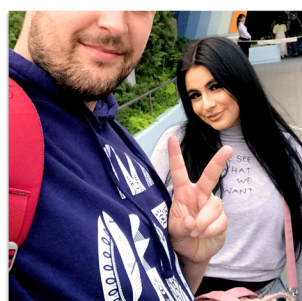
h: 6

a: 2

b:  $6 - 2 = 4$

x:  $4 \div (4 \text{ tabs}) = 1$

**2** Cut the top of the photo the same length as your tab and place the photo on top of your top tab, which is 2 in. for this example.



**3** Remember, if you want to keep an image on the back right way up, it will be upside down once flipped, so orient your photo accordingly.

**4** Cut the rest of the photo into even strips at size x (1 in. in this example).



## TOP TIP

Make sure you washi tape BOTH on top of the flip tab and underneath it, otherwise the tabs will peel off after light usage. You'll want to make the length of washi relative to the length of your flip tabs so they don't flip all wonky.

**5** Place the strips in order on the rest of the tabs. Line the bottom edge of the photo with the bottom edge of the flip tab.

**6** When placing the tabs to the page, make sure the tabs overlap the photos a little so they will flip easily.