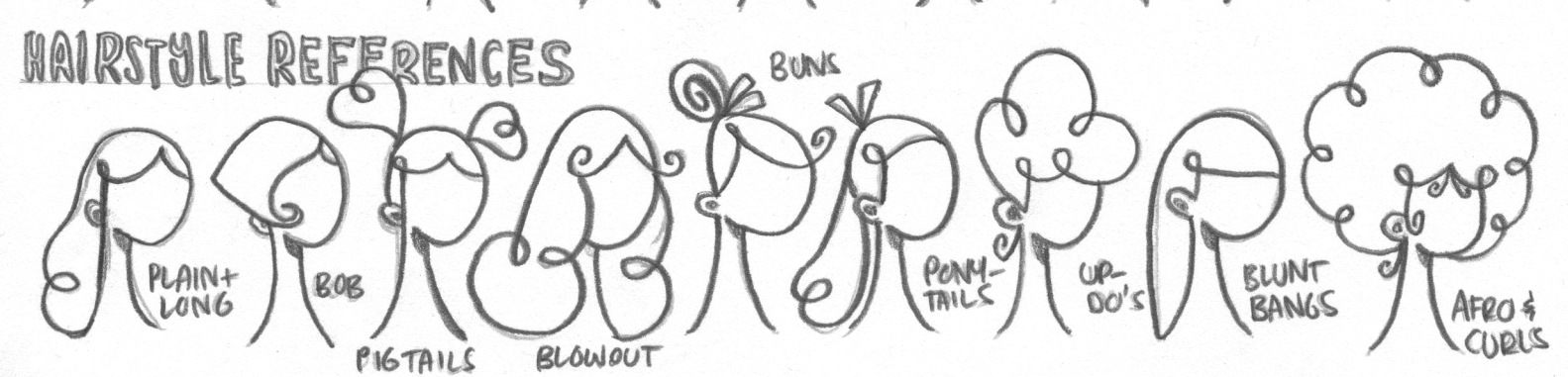
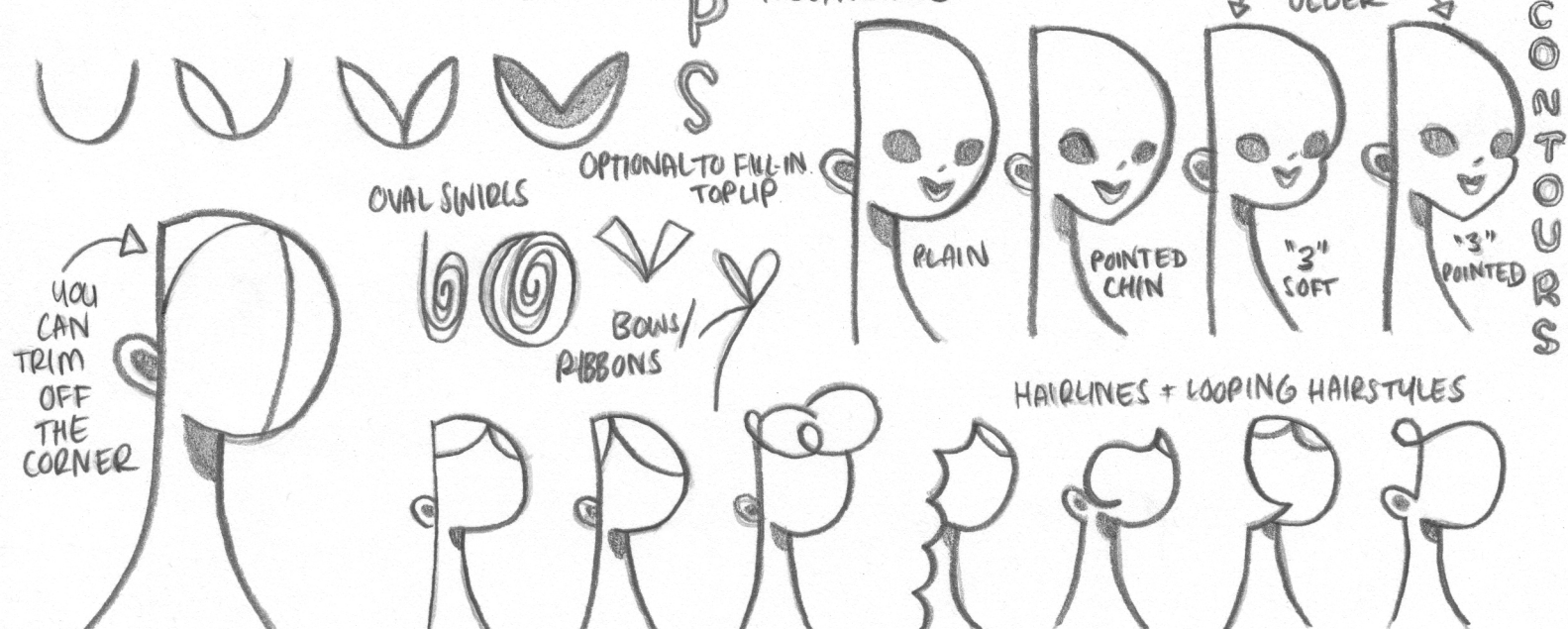
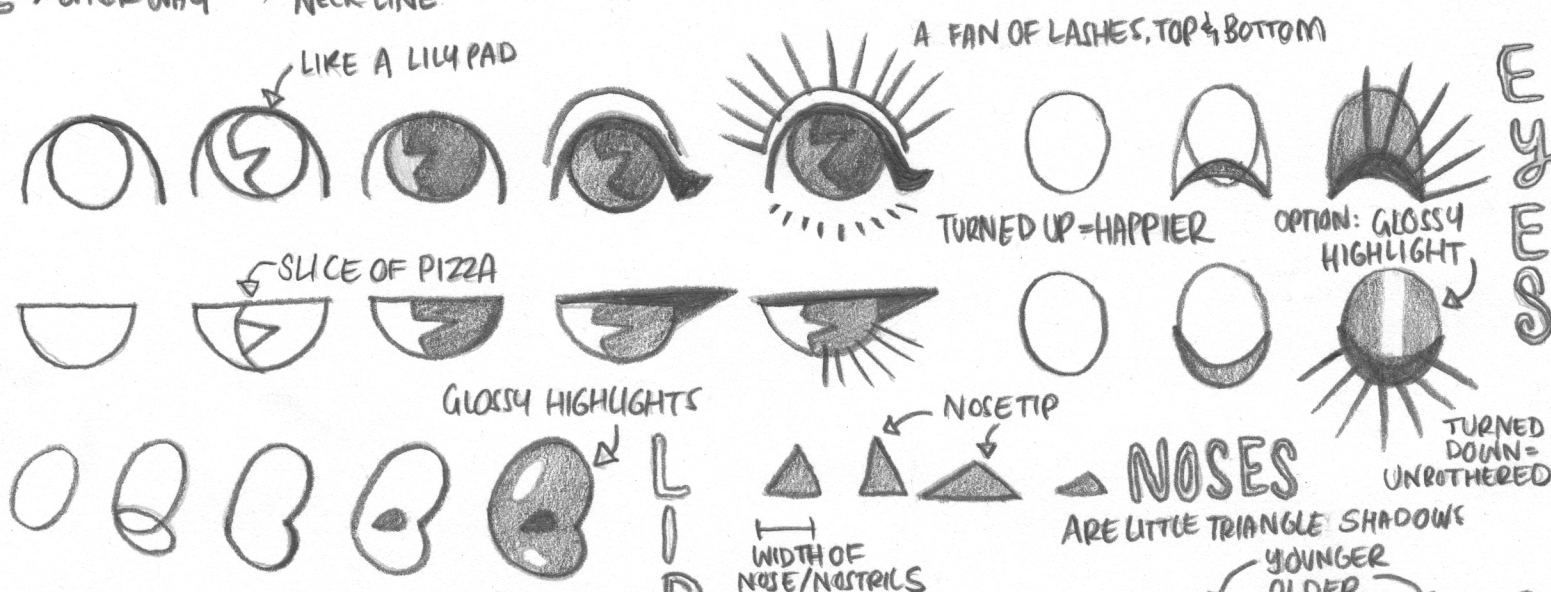
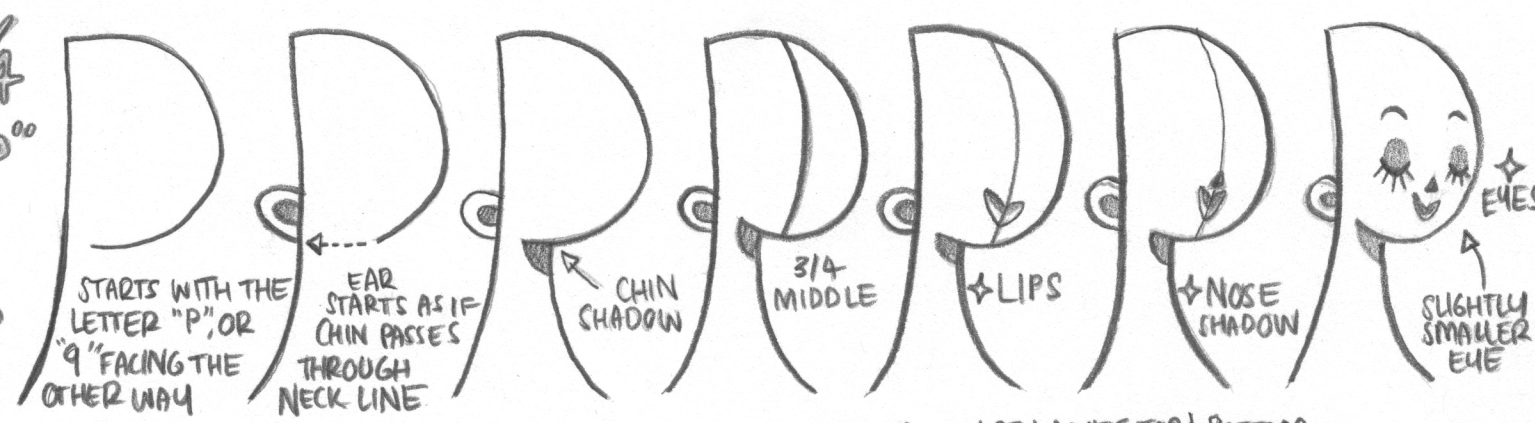


3/4 "P" FACE





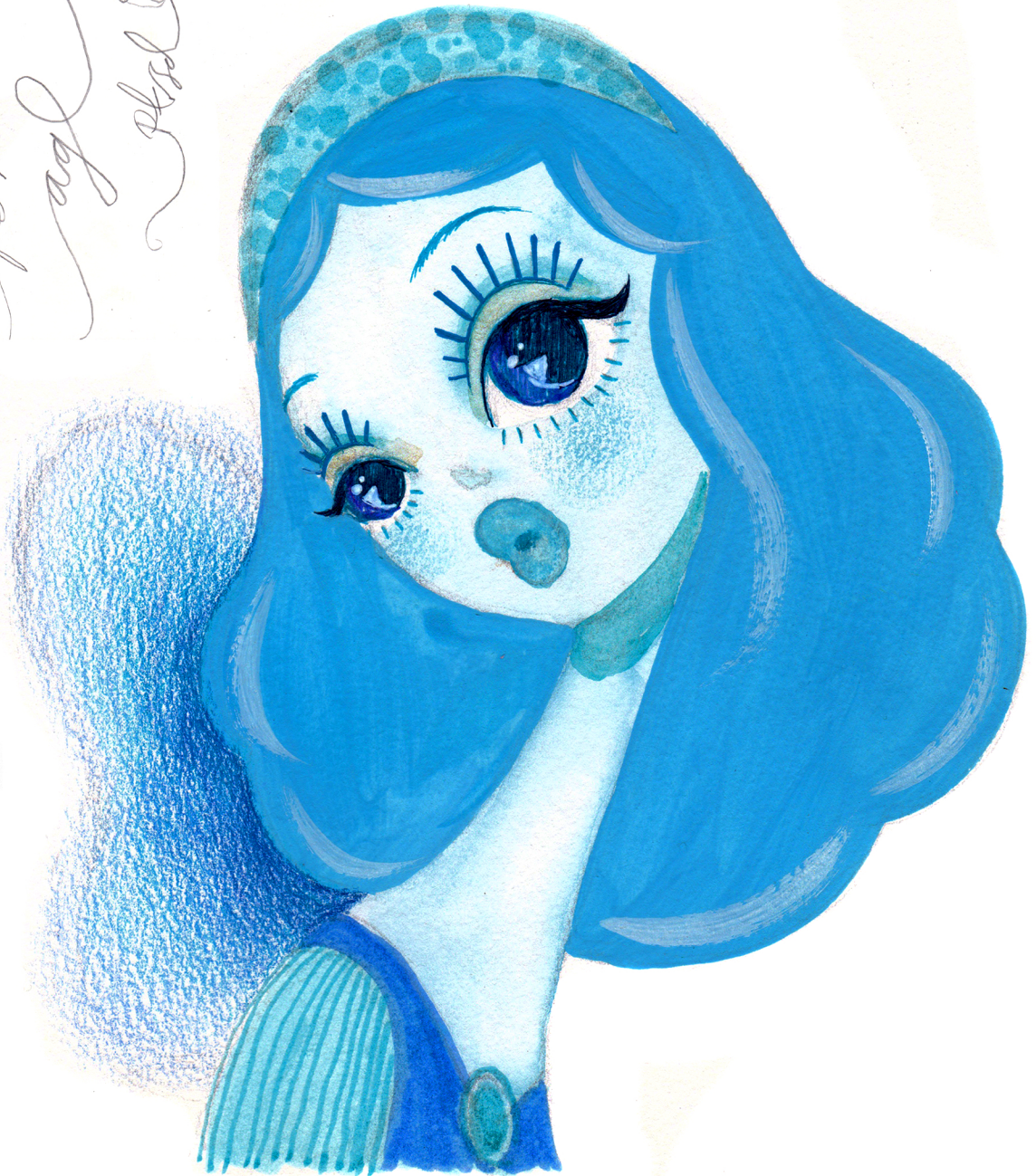
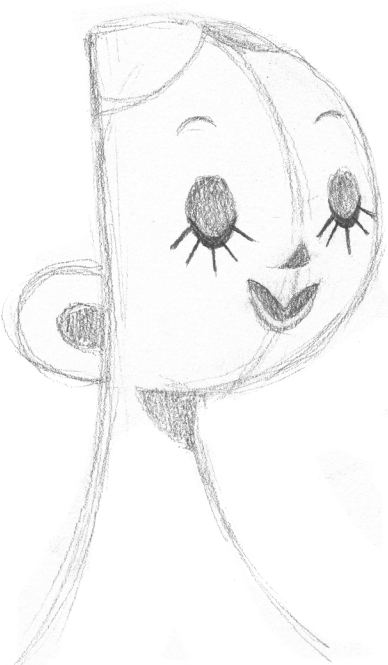
Download
Button
Sheet
PDF

ALL BLUE FAIRY

ZONE.	MEDIUM.
1. SKIN + NOSE	Watercolor
2. EYES + BROWS	Pen
3. LIPS + CHEEKS	crayon
4. HAIR	Gouache
5. DRESS + HEADBAND	marker
6. WINGS.	Pencil

PENCIL	WATERCOLOR
MARKER	PEN
CRAYON	GOUACHE

19



3 / 4 FASHION

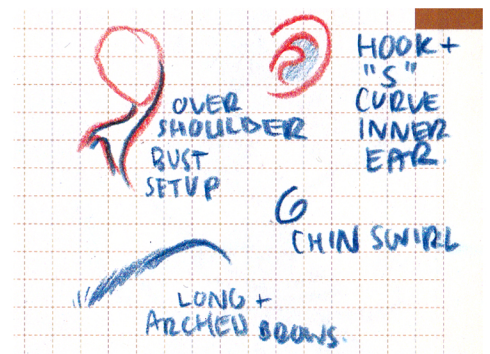
STYLE SHEET



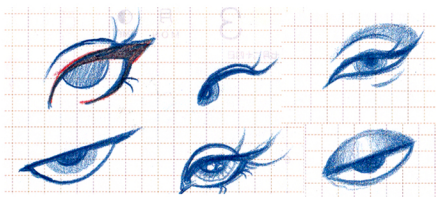
Sharper, angular facial contour. Front view eye shape, smaller on turned side. 3/4 view nose and lips, elongated neck, over the shoulder poses. Long arched eyebrows.



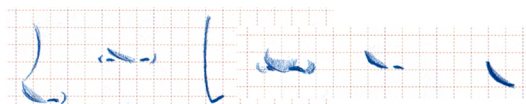
EXTRA NOTES



EYES



NOSE



MOUTH

